

SOHN FINE ART



Lee Jeong Lok, 5-3-1

Wonderland

Valda Bailey

Saskia Boelsums

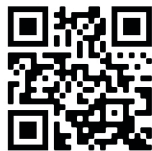
Neil Burnell

Lee Jeong Lok

Cassandra Sohn

July 15 – September 5

Sohn Fine Art presents Wonderland, a group show featuring ethereal, mystical photographs of the natural landscape by five diverse artists. The images in Wonderland are both based in reality and surrealistic. They highlight the wonders of the natural world and our human connection to it.



About the Artists

Valda Bailey is a freelance photographer living in Sussex, England. Her approach to photography is informed by her background in painting, and her influences come as much from artists working in that medium as photography. Largely motivated by color and form, Bailey's impressionistic photographs have a clear tension and dynamism, as she looks to push the boundaries of what photography is about. She strives to produce work that has movement and energy. Portraying an interpretation of a scene rather than a literal representation, Bailey makes her images using in-camera multiple exposure and ICM (intentional camera movement)—two techniques that help to create abstract shapes and painterly strokes. Learn more about her work at valdabailey.com.

The landscape images created by **Saskia Boelsums**, both overwhelming and picturesque, all have their own signature. They reveal the beauty of the landscape, the pale reflection of the moonlight on a frozen puddle, the golden glow of a cornfield in late summer, an almost transparent green wave in a gray, turbulent sea. Boelsums, who feels a strong connection to the work of landscape painters such as Van Gogh, Van Ruisdael, Constable, and Turner, considers herself to be a visual artist with a camera, who makes the atmosphere of the photographed landscapes tangible to the viewer. She was born in the Netherlands and grew up in Iran and Curaçao, and studied spatial and graphic design at the Art Academy in Holland. Her work has won a number of awards and has been exhibited around the world, including in London, Berlin, Moscow, New York, and Amsterdam. She lives in Nieuw-Schoonebeek in the Netherlands. Learn more about her work at saskiaboelsums.nl.

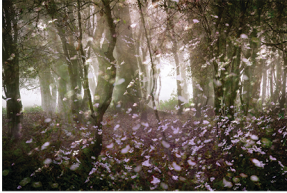
Neil Burnell is a multi-award winning photographer from Devon in the southwest of England. His career in graphic design has given him a unique style, and his eye for perfection has led to great success. Among many other awards, he was named Landscape Photographer of the Year in 2020 and World Landscape Photographer in 2020. Burnell's work provides a timely reminder that the UK is still blessed with pockets of unique wilderness, and that it must be protected. He recently released his latest book, *Mystical*, which he describes as "a photographic and spiritual journey through the eerie and timeless woods that nestle in the granite arms of Dartmoor National Park." Learn more about his work at neilburnell.com.

Lee Jeong Lok explores the diversity and spirit of the Korean landscape and national identity with nonspecific, dreamlike photographs that reveal the invisible yet essential elements of a scene. Created using long-exposure photography and both natural and artificial light, the "Tree of Life" series features seemingly bioluminescent trees, which illuminate the hidden vitality of the natural world. By melding the natural with the artificial, and the organic with the geometric, Lee visualizes the powerful yet imperceptible forces around us. His work has been widely exhibited, from Korea to Russia, Japan, and England. Learn more about his work at leejeonglok.com.

Born and raised in the Sangre de Cristo Mountains of Santa Fe, New Mexico, **Cassandra Sohn** calls the Berkshires of Western Massachusetts home. She owns and is the director of Sohn Fine Art in Lenox, MA. Classically trained in the arts from an early age, she is a graduate of the New School in Manhattan. Sohn experimented with many mediums and discovered her passion for photography in her early twenties. Sohn's most recent body of work "Water" was created utilizing multiple long exposures made in-camera. The photographs are printed on watercolor paper and hand worked with pastel and pencil. They are ethereal and dreamlike, abstracting our sense of place and questioning the edge between the real and unreal. In the process of producing the work, she became acutely aware of how turbulence and peacefulness can co-exist. Learn more about her work at sohnfineart.com.

Sohn Fine Art was founded in Lenox, Massachusetts, in 2011 by photographer and curator Cassandra Sohn. The gallery specializes in contemporary photography and is dedicated to the development, promotion, and exhibition of innovative contemporary artworks by international and local artists. Sohn Fine Art's mission is to promote broader understanding of, and community engagement with, photographic mediums through exhibitions, lectures, and workshops. Sohn Fine Art's annual Master Artist Series Program hosts world-class photographers. In addition to the gallery, Sohn Fine Art specializes in producing creative projects, including fine art printing and framing. Sohn is a renowned fine-art curator for both public museums and private collectors. Learn more and contact the gallery at sohnfineart.com. Follow Sohn Fine Art on Facebook and Instagram.

Valda Bailey



Confetti

24" x 36" Archival Pigment Print
Edition 3/10: \$2100
Framed 32" x 44": \$2600



Fragile

22.5" x 32" Archival Pigment Print
Edition 1/10: \$2100
Framed 29.5" x 39": \$2600



Sweet Scented Breeze

20" x 30" Archival Pigment Print
Edition 1/10: \$1500
Framed 28" x 38": \$2000



Skyfall

12.5" x 12.5" White Gold & Rose Gold
on Museum Glass
Unique Edition 1/5: \$3500



Inflorescence

12.25" x 15" Gold
on Museum Glass
Unique Edition 4/5: \$3500



Afterglow

12.25" x 15" Rose Gold
on Museum Glass
Unique Edition 1/5: \$3500

Saskia Boelsum



Landscape #129

38" x 38" Archival Pigment Print
Edition 1/5: \$5500
Framed 41.5" x 41.5": \$6300



Landscape #151

38" x 38" Archival Pigment Print
Edition 1/5: \$5500
Framed 41.5" x 41.5": \$6300



Landscape #160

38" x 38" Archival Pigment Print
Edition 1/5: \$5500
Framed 41.5" x 41.5": \$6300



Landscape #173

38" x 38" Archival Pigment Print
Edition 1/5: \$5500
Framed 41.5" x 41.5": \$6300



Landscape #193

38" x 38" Archival Pigment Print
Edition 1/5: \$5500
Framed 41.5" x 41.5": \$6300

Neil Burnell



Inner Glow

33" x 46.25" Archival Pigment Print
Edition 1/6: \$3700
Framed 36.5" x 50": \$4500



Return

33" x 82.5" Archival Pigment Print
Edition 2/6: \$6150
Framed 36.5" x 86": \$7650



Entwined

22.5" x 16" Archival Pigment Print
Edition 1/6: \$850
Framed 25.5" x 19.5": \$1350

Lee Jeong Lok



Tree of Life 5-3-1

30" x 51.25" C-type Print
Edition 2/10
Framed 32" x 53": \$7,050



Nabi 12

47" x 63" C-type Print
Edition 1/7
Framed 49" x 64.5": \$12,000

Cassandra Sohn



South Beach Sunrise 1

38" x 50.5" Archival Pigment Print
Unique Edition 1/10
Framed 41.5" x 51.5": \$6000



The Storm #2

7" x 11" Archival Pigment Print
Edition 2/10
Framed 15" x 18": \$750



The Storm #3

7" x 11" Archival Pigment Print
Edition 2/10
Framed 15" x 18": \$750