



## ADORE

John Atchley, Valda Bailey, Saskia Boelsums, Neil Burnell, John Clarke, Fran Forman, Ormond Gigli, Greg Gorman, Yannis Davy Guibinga, Chuck Kelton, Eric Korenman, Lee Jeong Lok, Edward Merritt, Dennis Lee Mitchell, Anne Mourier, Jonathan Prince, Jeff Robb, Patrick Sansone, Cassandra Sohn, Rachael Talibart, JP Terlizzi

March 10 - May 14

Art + Design Event Saturday, March 18, 3:00 – 6:00  
Please RSVP to [info@sohnfineart.com](mailto:info@sohnfineart.com) or 413-551-7353

With a variety of treasures in multiple genres, there is much to cherish in Sohn Fine Art's new exhibit, "Adore". The show presents a curated selection of unique artworks by many of the gallery's represented artists. As Sohn Fine Art continues to expand its collection of innovative mediums, "Adore" highlights both iconic and newly released, as well as pioneering, works of art.

Featured are contemporary photographs as well as sculpture and mixed-media made with unconventional materials created by both emerging and world-renowned artists, local and international. A common thread is an exploration of conceptual content while utilizing both traditional methods and cutting-edge technology in their processes. Many of these artists' breakthroughs play significant roles in the evolution of fine art. To highlight a few, Dennis Lee Mitchell uses smoke as a drawing tool, delicately applying carbon/soot to the surface of paper. While the resulting images evoke natural forms, his imagery remains abstract, striking a balance between representational and the ephemeral.

Edward Merritt sources and excavates graffiti debris and paint he finds peeling or decaying from old warehouse buildings, train tunnels, bridges, roads and other sites which are often hundreds of layers thick and have succumbed to time and gravity. He then manipulates and re-composes these materials to create new narratives. His works draw awareness to social and environmental issues with the use of recycled and repurposed materials. Though abstract, Chuck Kelton's camera-less photographic works are representative, often simulating seascapes or other-worldly environments. At the same time, they are evocative of other medias such as watercolors or oil paintings, charcoal drawings or pastels. However, no such actual landscape or outside medias exist in the creation of his work, as his practice foregoes cameras, lenses and negatives. Kelton makes chemograms and photograms using traditional photosensitive papers and darkroom chemicals such as gold chloride, selenium and iron.

London-based artist, Jeff Robb, graduated from the Royal College of Art in 1992 with a Master's Degree in Fine Art Holography. Since then, Robb has experimented with three-dimensional imaging and developed and patented a new type of lenticular photography. Shortly after he graduated, the Victoria and Albert Museum in London acquired one of his holograms. It was the first holographic artwork to be accessioned into the V & A Museum, and any museum in London. Robb says, "Liminality is a special place of temporary disorientation (of one's sensory threshold). The medium of lenticular photography is perfect for seeding this condition - it is a 2-dimensional print with 3-dimensional illusory properties, so for a short time the audience's perception of reality is suspended. This period of suspension is, I believe, important for our minds to experience, especially when we, in the Western world, generally live in a spiritual vacuum. We need magical inspiration in our lives, and I'd like to share a sense of this in my work."

Newly represented by the gallery and showing there for the first time, Patrick Sansone uses analog cameras and film to create photographs that reference observations of stillness, lure, and intermission. Sansone's quiet, dreamy works reveal the decaying signage, glass soda bottles, empty auditorium seats, abandoned industrial sites and roadside diners of the urban American landscape. Sansone captures these moments in glimpses divorced from context - the landscapes and locales are decidedly post-human, almost otherworldly. Sansone describes the state of mind he reaches for in making this work as a "heightened state of noticing." The work on exhibit came directly from his recent exhibit at MASS MoCA, "Noticing: Walls | Windows | Words". When not shooting, Patrick Sansone is a Grammy-nominated singer, songwriter, musician, and music producer, and also a member of the band Wilco.

John Clarke combines mediums, using photographic prints as backdrops for emotional layers of line, color and symbol. Hanging one visual language on the balance of another, Clarke uses acrylic, pastel, colored pencil and gesso to create one-of-a-kind pieces. He is driven to produce images that are purely personal, diffusing and abstracting the world around him in the hopes that they will spark an unknown journey into aesthetic, emotional and spiritual territories. He calls it "looking through the curtain". The creation of an image holds the excitement of unlimited potential.

**SOHN FINE ART**

69 Church St. Lenox, MA | [info@sohnfineart.com](mailto:info@sohnfineart.com) | [www.sohnfineart.com](http://www.sohnfineart.com) | 413-551-7353

# ADORE

## Main Gallery

CASSANDRA SOHN



**The Storm #2**  
7.5" x 11.5" Photograph  
Archival Pigment Print  
Edition 2/10  
Framed 15" x 18": **\$750**



**The Storm #3**  
7" x 11" Photograph  
Archival Pigment Print  
Edition 2/10  
Framed 15" x 18": **\$750**



**Waves & Water 1**  
38" x 50" Archival Pigment Print  
Hand-worked with Pastel  
Unique Edition 4/10: **\$5,000**  
Framed 41.5" x 54": **\$6,000**



**Waves & Water 3**  
38" x 50" Archival Pigment Print  
Hand-worked with Pastel and  
Colored Pencil  
Unique Edition 4/10: **\$5,000**  
Framed 41.5" x 54": **\$6,000**

EDWARD MERRITT



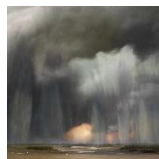
**Landscape, 2019**  
60" x 60"  
Crushed Red Road Curb Paint, Recycled Building Paint, Repurposed Concrete  
Construction Board, Discarded Spray Paint on Aluminum Board  
Unique  
Framed 61" x 61": **\$12,000**

SOHN FINE ART

69 Church St., Lenox, MA | [info@sohnfineart.com](mailto:info@sohnfineart.com) | 413-551-7353 | [www.sohnfineart.com](http://www.sohnfineart.com)

# ADORE

SASKIA BOELSUMS



**Landscape #151**  
38" x 38" Photograph  
Archival Pigment Print  
Edition 1/5: **\$5,500**  
Framed 41.5" x 41.5": **\$6,300**



**Landscape #129**  
38" x 38" Photograph  
Archival Pigment Print  
Edition 1/5: **\$5,500**  
Framed 41.5" x 41.5": **\$6,300**



**Landscape #160**  
38" x 38" Photograph  
Archival Pigment Print  
Edition 1/5: **\$5,500**  
Framed 41.5" x 41.5": **\$6,300**

JOHN CLARKE



**Winter Afternoon**  
34" x 34" Archival Pigment Print  
Hand Worked with Pastel and  
Colored Pencil  
Unique  
Framed 41.5" x 41.5": **\$5,750**



**Breeze over the Meadow**  
30" x 20" Archival Pigment Print  
Hand Worked with Pastel and  
Colored Pencil  
Unique  
Framed 39" x 29": **\$3,500**



**Untitled**  
40" x 60" Archival Pigment Print  
Hand Worked with Pastel and  
Colored Pencil  
Unique  
Framed 47.5" x 67.5": **\$7,500**

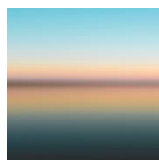


**The Riverbank**  
31.25" x 21" Archival Pigment Print  
Hand Worked with Pastel and  
Colored Pencil  
Unique  
Framed 40.5" x 30.5": **\$3,500**



**The Meadow**  
34" x 34" Archival Pigment Print  
Hand Worked with Pastel and  
Colored Pencil  
Unique  
Framed 39" x 39": **\$5,750**

JOHN ATCHLEY



**Lake Michigan #14**  
39.5" x 39.5" Photograph  
Archival Pigment Print  
Edition 2/3  
Framed 42" x 42": **\$6,000**

SOHN FINE ART

69 Church St., Lenox, MA | [info@sohnfineart.com](mailto:info@sohnfineart.com) | 413-551-7353 | [www.sohnfineart.com](http://www.sohnfineart.com)

# ADORE

## Back Gallery

YANNIS DAVY GUIBINGA



*The Darkest Colour 1, 2017*  
32" x 21" Photograph  
Archival Pigment Print  
Edition 6/6  
Framed 34" x 23": **\$2,300**

CHUCK KELTON



*View Not From a Window #3, 2018*  
Gelatin Silver Chemigram  
Unique  
Framed 45" x 35": **\$16,000**



*View Not From a Window #5, 2018*  
Gelatin Silver Chemigram  
Unique  
Framed 45" x 35": **\$16,000**



*View Not From a Window #7, 2018*  
Gelatin Silver Chemigram  
Unique  
Framed 45" x 35": **\$16,000**



*A Holy Land 1, 2016*  
13.5" x 10.5"  
Gelatin Silver Chemigram  
Unique  
Framed 22" x 18.5": **\$3,200**

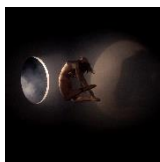


*A Holy Land 13, 2017*  
13.5" x 10.5"  
Gelatin Silver Chemigram  
Unique  
Framed 16.5" x 13.5": **\$3,200**



*A Holy Land 10, 2017*  
13.5" x 10.5"  
Gelatin Silver Chemigram  
Unique  
Framed 16" x 13.5": **\$3,200**

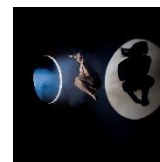
JEFF ROBB



*Threshold I*  
38" x 38" Lenticular Photograph  
Edition 1/9  
Framed 40" x 40": **\$15,000**



*Juno V*  
38" x 38" Lenticular Photograph  
Edition 1/9  
Framed 40" x 40": **\$15,000**



*Threshold IV*  
38" x 38" Lenticular Photograph  
Edition 1/9  
Framed 40" x 40": **\$15,000**

SOHN FINE ART

69 Church St., Lenox, MA | [info@sohnfineart.com](mailto:info@sohnfineart.com) | 413-551-7353 | [www.sohnfineart.com](http://www.sohnfineart.com)

# ADORE

DENNIS LEE MITCHELL



***Untitled***

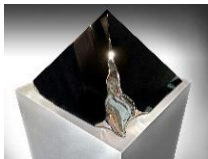
Black Smoke

33.25" x 33.25" Smoke on Paper

Unique

Framed 39.5" x 39.5": **\$15,000**

JONATHAN PRINCE



***Pyramid II, 2017***

Stainless Steel & Automotive Paint

20" x 30" x 30"

Unique: **\$150,000**



***Commencement, 2008***

Cambrian Granite

28" x 36" x 36"

Unique: **\$25,000 each**

**\$60,000 set of 3**

SOHN FINE ART

69 Church St., Lenox, MA | [info@sohnfineart.com](mailto:info@sohnfineart.com) | 413-551-7353 | [www.sohnfineart.com](http://www.sohnfineart.com)

# ADORE

## Studio Gallery

VALDA BAILEY



**Fragile**

20.5" x 31" Photograph  
Archival Pigment Print  
Edition 1/10: **\$2,800**  
Framed 29.5" x 39": **\$3,300**



**Confetti**

24" x 36" Photograph  
Archival Pigment Print  
Edition 3/10: **\$2,800**  
Framed 32.5" x 44.5": **\$3,300**



**Afterglow**

12.25" x 15" Rose Gold on Museum  
Glass  
Unique Edition 1/5: **\$3,500**

NEIL BURNELL



**Return**

33" x 82.5" Photograph  
Archival Pigment Print  
Edition 2/6  
Framed 36.5" x 86": **\$7,650**

ANNE MOURIER



**Little Box**

Altered Miniatures in a Shadowbox  
5.5" x 7.5" x 3"  
Unique: **\$650**



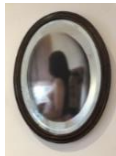
**Little Box**

Altered Miniatures in a Shadowbox  
5.5" x 7.5" x 3"  
Unique: **\$650**



**Muse #5**

Photographic Print on Hand-cut vinyl,  
Small Circular Mirror 6" diameter  
Unique: **\$450**



**Muse #14**

11.5" x 9" Photographic print on  
Hand-cut Vinyl, Antique Mirror with  
Wooden Frame  
Unique: **\$450**



**Rosa Salva #13**

Liberty Fabric and Dry Plants  
Unique  
Framed 20" x 15.5" x 5": **\$2,300**

SOHN FINE ART

69 Church St., Lenox, MA | [info@sohnfineart.com](mailto:info@sohnfineart.com) | 413-551-7353 | [www.sohnfineart.com](http://www.sohnfineart.com)

# ADORE

## FRAN FORMAN



**Blue Chair, 2017**  
13" x 20" Photograph  
Archival Pigment Print  
Edition 2/10  
Framed 18.25" x 25": **\$1,000**



**Ascendant, 2018**  
19.5" x 30" Photograph  
Archival Pigment Print  
Edition 1/3  
Framed 25" x 35": **\$3,000**



**Missing, 2017**  
16" x 24" Photograph  
Archival Pigment Print  
Edition 2/5  
Framed 19" x 27": **\$1,500**

## JP TERLIZZI



**Marchesa Camellia with Rhubarb, 2020**  
20" x 30" Photograph  
Archival Pigment Print  
Edition 3/5: **\$2,400**  
Framed 37" x 27": **\$2,800**



**Wedgwood Wild Strawberry with Strawberry, 2019**  
20" x 30" Photograph  
Archival Pigment Print  
Edition 2/5: **\$2,400**  
Framed 37" x 27": **\$2,800**

## ORMOND GIGLI



**Girls in the Windows, 1960**  
37" x 37" Photograph  
Archival Pigment Print  
Edition 22/45: **\$40,000**  
Framed 50.25" x 50.25": **\$41,500**

## ERIC KORENMAN



**Peonies**  
37.5" x 36.75" Photograph  
Archival Pigment Print  
Edition 1/10: **\$4,500**  
Framed As Is, 47" x 46.25": **\$5,000**

SOHN FINE ART

69 Church St., Lenox, MA | [info@sohnfineart.com](mailto:info@sohnfineart.com) | 413-551-7353 | [www.sohnfineart.com](http://www.sohnfineart.com)

# ADORE

PATRICK SANSONE



**Fireworks**

12" x 14" Photograph  
LAMBDA C-print  
Edition 1/10: **\$750**  
Framed 16.5" x 18.5": **\$1,100**



**Rosie's Odds and Ends**

10" x 15" Photograph  
LAMBDA C-print  
Edition 1/10: **\$750**  
Framed 15.5" x 20.5": **\$1,100**



**Catfish**

10" x 15" Photograph  
LAMBDA C-print  
Edition 1/10: **\$750**  
Framed 15.5" x 20.5": **\$1,100**



**Pink Door**

12" x 14" Photograph  
LAMBDA C-print  
Edition 1/10: **\$750**  
Framed 16.5" x 18.5": **\$1,100**



**Torn Poster (Shelby Ave)**

12" x 14" Photograph  
LAMBDA C-print  
Edition 1/10: **\$750**  
Framed 16.5" x 18.5": **\$1,100**



**Vegas Tire Shop**

10" x 15" Photograph  
LAMBDA C-print  
Edition 1/10: **\$750**  
Framed 15.5" x 20.5": **\$1,100**



**Jewelry**

10" x 15" Photograph  
LAMBDA C-print  
Edition 1/10: **\$750**  
Framed 15.5" x 20.5": **\$1,100**



**Greenwood Sprite**

12" x 14" Photograph  
LAMBDA C-print  
Edition 1/10: **\$750**  
Framed 16.5" x 18.5": **\$1,100**



**Tutwiler Ice Cream**

10" x 15" Photograph  
LAMBDA C-print  
Edition 1/10: **\$750**  
Framed 15.5" x 20.5": **\$1,100**



**Furniture**

10" x 15" Photograph  
LAMBDA C-print  
Edition 1/10: **\$750**  
Framed 15.5" x 20.5": **\$1,100**

SOHN FINE ART

69 Church St., Lenox, MA | [info@sohnfineart.com](mailto:info@sohnfineart.com) | 413-551-7353 | [www.sohnfineart.com](http://www.sohnfineart.com)



# ADORE

GREG GORMAN



***Warhol 2 (Color Portrait)***

40" x 32" Photograph

Archival Pigment Print

Edition 2/10: **\$12,500**

Framed 49" x 41": **\$13,500**

RACHAEL TALIBART



***Sedna***

53" x 38" Photograph

Archival Pigment Print

Edition AP 3/3 (last print)

Framed 57" x 41.5": **\$16,000**

LEE JEONG LOK



***Tree of Life 5-3-1***

30" x 51.25" Photograph

C-type print

Edition 2/10

Framed 32" x 53": **\$7,050**

SOHN FINE ART

69 Church St., Lenox, MA | [info@sohnfineart.com](mailto:info@sohnfineart.com) | 413-551-7353 | [www.sohnfineart.com](http://www.sohnfineart.com)

# ADORE

## Portfolio Gallery

SETH RESNICK



*Sehested Fjord 37, Greenland*

18" x 27" Photograph

Archival Pigment Print

Edition 1/25: **\$2,500**

Framed 27" x 36": **\$3,000**

SHAWN THEODORE



*Helengiwe the Mudiwa and the Teardrop of Obelus, 2018*

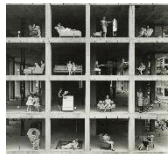
16" x 20" Photograph

Archival Pigment Print

Edition 1/20: **\$2,000**

Framed 25" x 31": **\$2,200**

ORMOND GIGLI



*Vignettes*

12" x 12.75" Photograph

Gelatin Silver Printed By Artist

Unique, signed en verso: **\$10,000**

Framed 19" x 19.75": **\$10,225**



*Girls in the Windows, 1960*

16" x 16" Photograph

Gelatin Silver Printed by Artist

AP 3/5: **\$20,000**

Framed 24" x 24": **\$20,350**

SOHN FINE ART

69 Church St., Lenox, MA | [info@sohnfineart.com](mailto:info@sohnfineart.com) | 413-551-7353 | [www.sohnfineart.com](http://www.sohnfineart.com)

# ADORE

JEFF ROBB



***Nighfall 17***

26" x 20" Lenticular Photograph

Edition 1/15

Framed 27.25" x 21.25": **\$6,500**

YANNIS DAVY GUIBINGA



***The Darkest Colour VIII, 2017***

21" x 32" Photograph

Archival Pigment Print

Edition 2/6

Framed 23.5" x 34": **\$1,500**

ANTON LAYALIN



***Portrait of Africa #57***

36" x 27" Photograph

Archival Pigment Print

Edition 7/25: **\$3,200**

Framed 43.5" x 38": **\$4,250**

DENNIS LEE MITCHELL



***Untitled***

39" x 43" Smoke on Paper

Black & Colored Smoke

Unique

Framed 45.5" x 49.25": **\$18,000**

SOHN FINE ART

69 Church St., Lenox, MA | [info@sohnfineart.com](mailto:info@sohnfineart.com) | 413-551-7353 | [www.sohnfineart.com](http://www.sohnfineart.com)