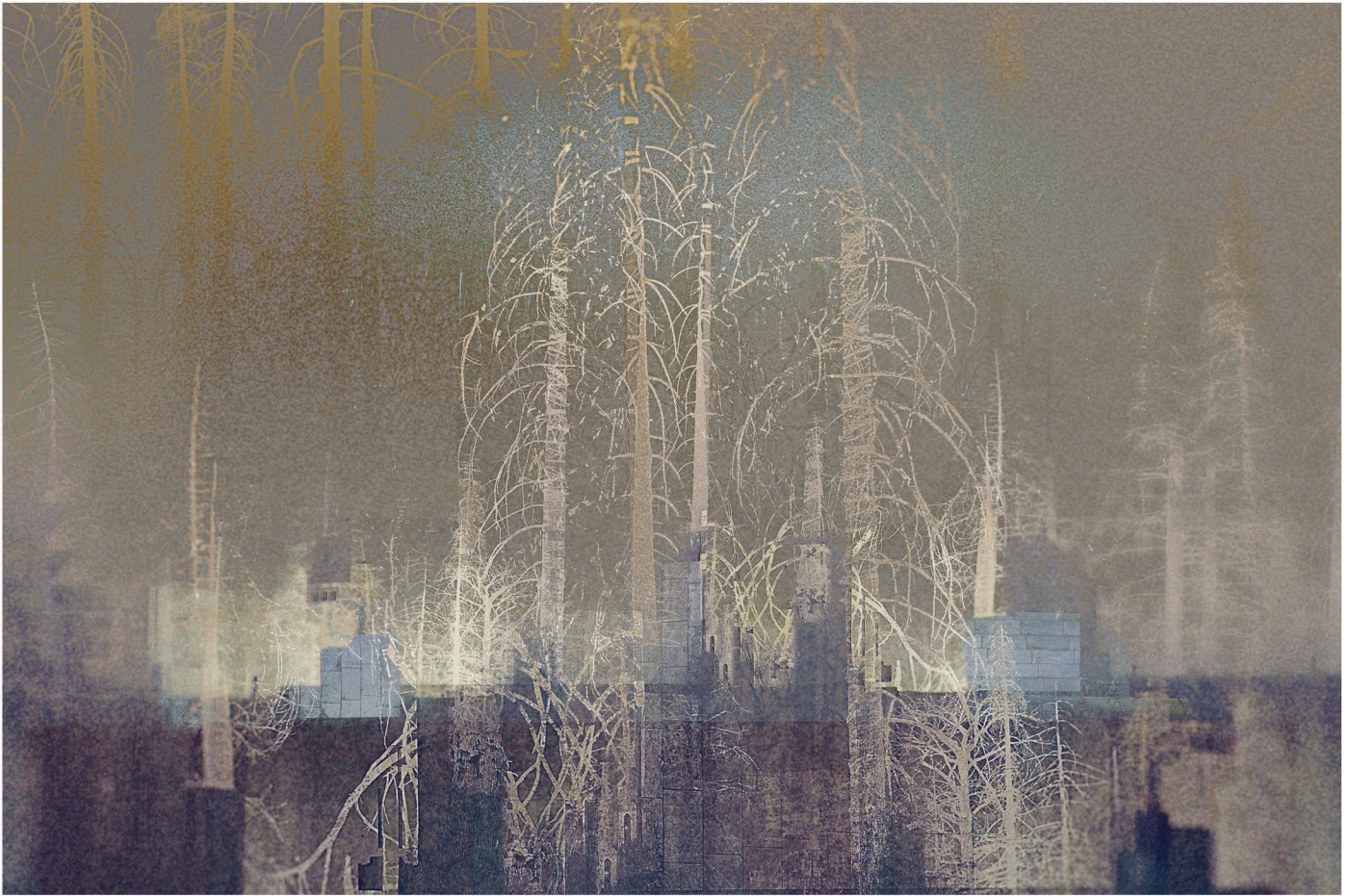


SOHN FINE ART



Abstract Rhythm & Blue Notes

Valda Bailey
Doug Chinnery
Deborah Loeb Bohren
Edie Clifford
Laura Goin
Jennifer Gordon
Linda Hacker
Barb Kreutter

September 9 - October 3

Reception, Artist Talk & Book Signing September 10

Reception and Book Signing 4:00 - 5:30 at Sohn Fine Art

Private Dinner and Artist Talk with Valda Bailey & Doug Chinnery in Bellflower at Apple Tree Inn, 6:00

(Artist Talk is a ticketed event with limited space. Purchase tickets through Sohn Fine Art's website: www.sohnfineart.com)

Sohn Fine Art is pleased to present Abstract Rhythm & Blue Notes, a celebration of abstract photography highlighting the work of eight emerging and established artists from around the globe. The works on exhibit were created during an intensive, year-long workshop which explored the intersection of photography, abstraction and creativity under the guidance of Valda Bailey and Doug Chinnery. The show features the two instructors and six of their students.

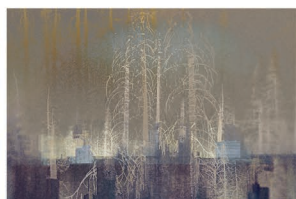
The exhibition and surrounding events are made possible by Sohn Fine Art's Master Artist Series program, which hosts world class photographers in the Berkshires annually. The goal of this program is to offer unique experiences with artists in the top of their fields to patrons and collectors of photography, as well as professional and aspiring photographers and artists. Sohn Fine Art's Director states, "I founded MAS to contribute to the vitality of the arts, culture and education in the Berkshire region. I wanted to create unique and intimate ways of engagement between the artists and the community that promote broader understandings of, and engagements with, artistic mediums through exhibitions, lectures and workshops with world-class photographers."

This exhibition of abstract photography is an artistic culmination of works inspired by the world of jazz music, specifically blue notes, an expressive technique using minor intervals where major intervals are expected. Quite similarly, these artists employ their own methods of multiple exposures, intentional camera movement and post-processing methods in order to abstract shapes, eliminate detail and alter the perception of reality. They work in a way that is controllable to a certain degree but retains a strong element of unpredictability and serendipity.

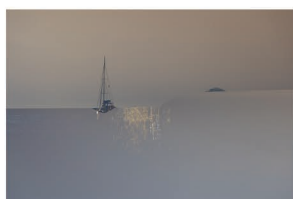
Valda Bailey is a freelance photographer living in Sussex, England. Her approach to photography is informed by her background in painting, and her influences come as much from artists working in that medium as photography. Largely motivated by color and form, Bailey's impressionistic photographs have a clear tension and dynamism, as she looks to push the boundaries of what photography is about. She strives to produce work that has movement and energy. Portraying an interpretation of a scene rather than a literal representation, Bailey makes her images using in-camera multiple exposure and ICM (intentional camera movement)—two techniques that help to create abstract shapes and painterly strokes. Learn more about her work at valdabailey.com

Doug Chinnery is a photographic expressionist artist with his camera being his principal medium. He is driven to make work which reflects his love of abstraction, focusing on details rather than the wider world. In his quest to evoke emotional responses, he captures beauty from the mundane and overlooked, having little interest in depicting things as they are. Finding balance and harmony in pure shapes, colours, forms, contrast and texture, Chinnery's works are inspired by Rothko, Ryman, Feiler and Hodgkin. He has been featured in National Geographic and countless other national/international publications and has exhibited extensively in galleries in the UK and Europe. He enjoys a quiet life with his wife and pups in the hills of Northern England. Learn more about his work at dougchinnery.com

Valda Bailey



Rest not Agitate
20" x 30" Archival Pigment Print
Edition 1/10: **\$2100**
Framed 30.25" x 41.25": **\$2550**



Last Light
20" x 30" Archival Pigment Print
Edition 1/10: **\$2100**
Framed 30.25" x 41.25": **\$2550**



Afterglow
12.25" x 15" Rose Gold
on Museum Glass
Unique Edition 1/5: **\$3500**



Hanami - Tokyo in April
12.5" x 16.5" Rose Gold
on Museum Glass
Edition 2/5: **\$3500**

Valda Bailey cont.



Skyfall

12.5" x 12.5" White Gold
& Rose Gold on Museum Glass
Unique Edition 1/5: \$3500



Sacred Palm

12" x 18" Moon Gold
on Museum Glass
Edition 2/5: \$3500

Doug Chinnery



Parisienne Rooftops

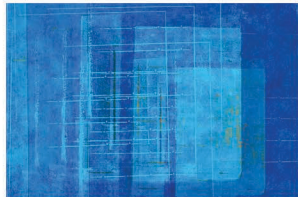
20" x 30" Archival Pigment Print
Edition 1/5
Framed 27.25 x 37.25": \$1800



Skyline Splash

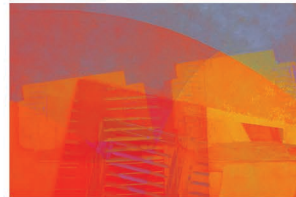
20" x 30" Archival Pigment Print
Edition 1/5
Framed 27.25" x 37.25": \$1800

Deborah Loeb Bohren



Tuscan Blue Notes #5

20" x 30" Archival Pigment Print
Edition 1/10
Framed 27.25" x 37.25": \$1250



Field of Poppies #3

20" x 30" Archival Pigment Print
Edition 3/10
Framed 27.25" x 37.25": \$1250

Edie Clifford



Urban Nights

30" x 24" Archival Pigment Print
Edition 1/5
Framed 37.5" x 31.25": \$1200



Blue Notes Jazz Cafe

30" x 24" Archival Pigment Print
Edition 1/5
Framed 37.25" x 31.25": \$1200

Laura Goin



Thousand Stories

20" x 30" Archival Pigment Print
Edition 1/10
Framed 27.25" x 37.25": \$1200



Aquarelle

20" x 30" Archival Pigment Print
Edition 1/10
Framed 27.25" x 37.25": \$1200

Jennifer Gordon



Et tu

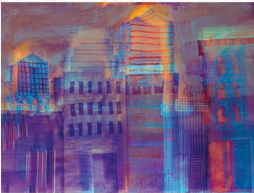
30" x 24" Archival Pigment Print
Edition 1/12
Framed 37.25" x 31.25": \$1300



Embers' warmth

30" x 24" Archival Pigment Print
Edition 1/12
Framed 37.25" x 31.25": \$1300

Linda Hacker



Purple Rising

22.5 x 30" Archival Pigment Print
Edition 1/10
Framed 29.75" x 37.25": \$1300



Urban Tapestry

22.5 x 30" Archival Pigment Print
Edition 1/10
Framed 29.75" x 37.25": \$1300



A special thank you to our
2022 Master Artist Series Partners



APPLE TREE INN

Lenox, Massachusetts

www.appletreeinnlenox.com

Barb Kreutter



Fractured Expression

30" x 20" Archival Pigment Print
Edition 1/15
Framed 27.25" x 37.25": \$1300



Under the Ice

30" x 20" Archival Pigment Print
Edition 1/15
Framed 27.25" x 37.25": \$1300

THE MOUNT
EDITH WHARTON'S HOME

www.edithwharton.org



www.musehoustatonic.com